

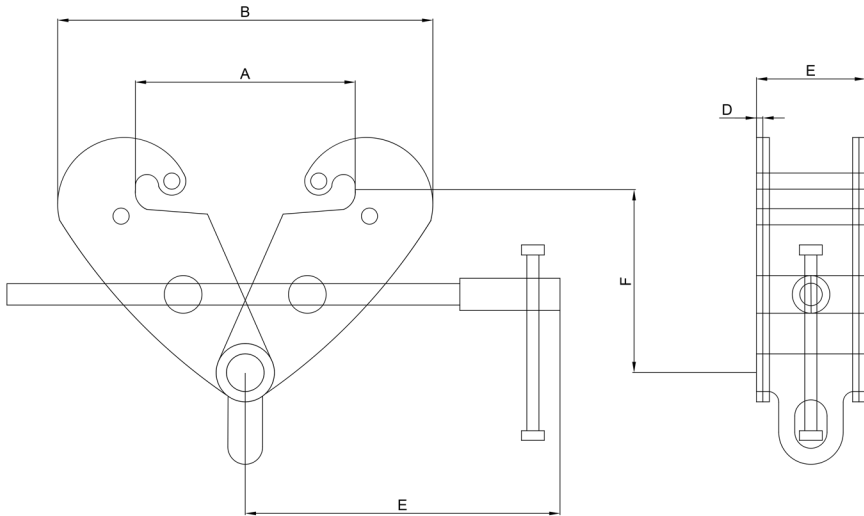
# Beam Clamp

**Manufactured and Tested according to EN13155**

Email: [enquiries@cwssales.uk](mailto:enquiries@cwssales.uk)

**Available in Black 1T to 10T.**

- Complete with small shackle as standard.
- Quick and easy installation.
- Creates lifting point for use with manual hoists etc.



Capacity (tonnes)	1	2	3	5	10
<b>Proof Load (tonnes)</b>	1.5	3	4.5	7.5	15
<b>I-Beam Width (mm)</b>	75-220	75-220	80-320	80-320	80-350
<b>A (max)</b>	265	260	370	380	390
<b>B (min)</b>	184	185	220	222	234
<b>B (max)</b>	367	360	510	522	536
<b>C</b>	80	74	120	127	134
<b>D</b>	5	6	8	10	12
<b>E</b>	230	215	274	276	274
<b>F (max)</b>	173	155	227	222	245
<b>F (min)</b>	102	102	132	98	150
<b>G</b>	24	25	46	45	69
<b>H</b>	21	22	24	23.2	32.6
<b>Weight (kg)</b>	4	4.6	9.1	11	14.6
<b>Weight with shackle (kg)</b>	4.7	5.1	10.2	11.94	15.14